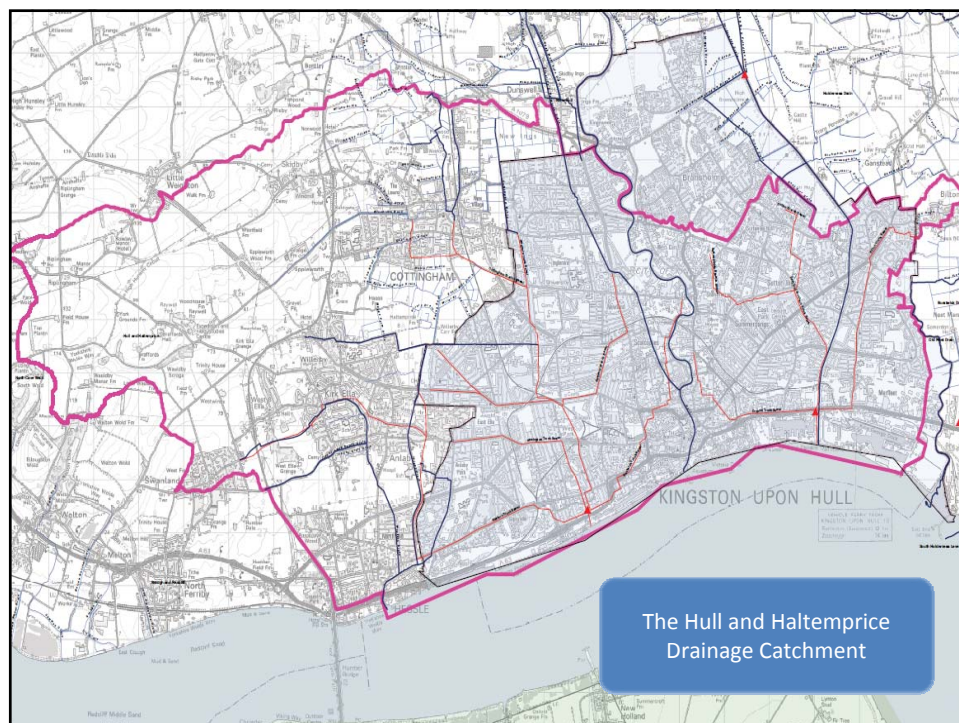
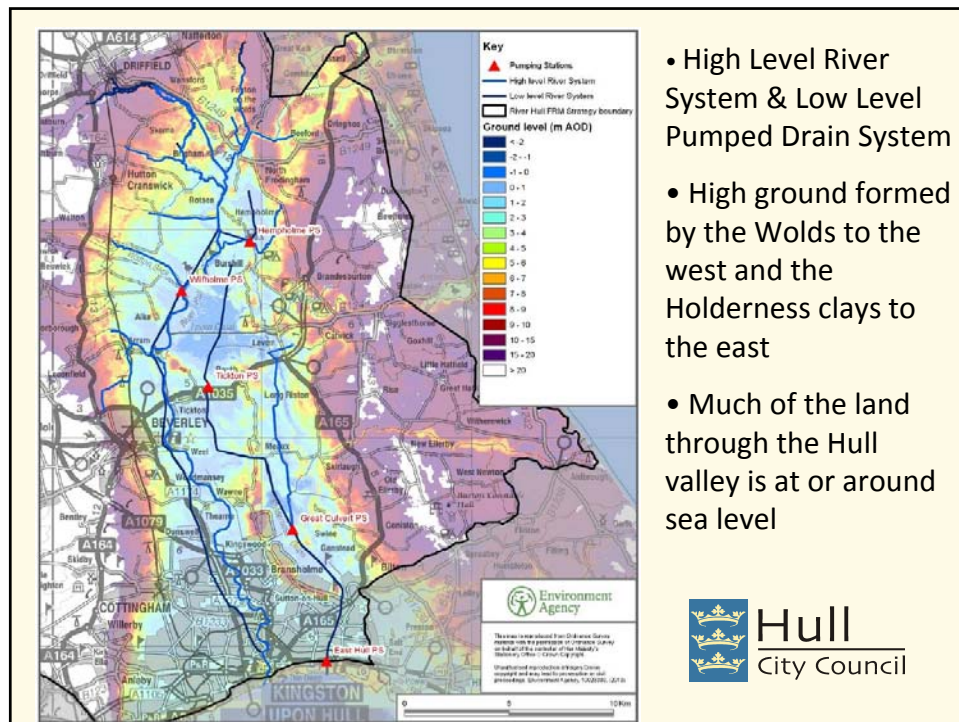
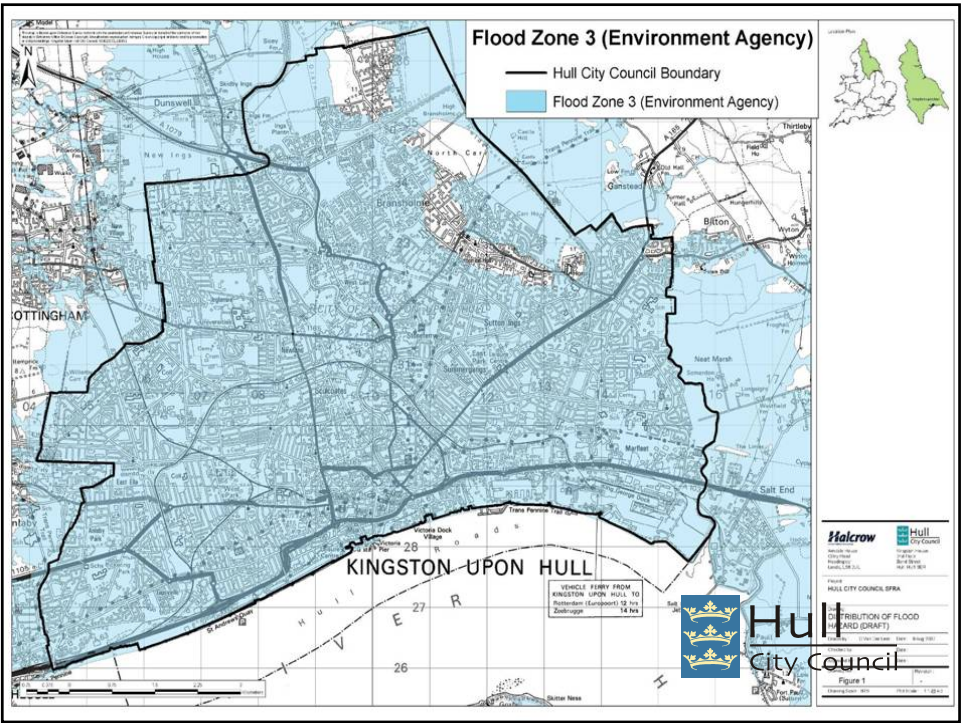
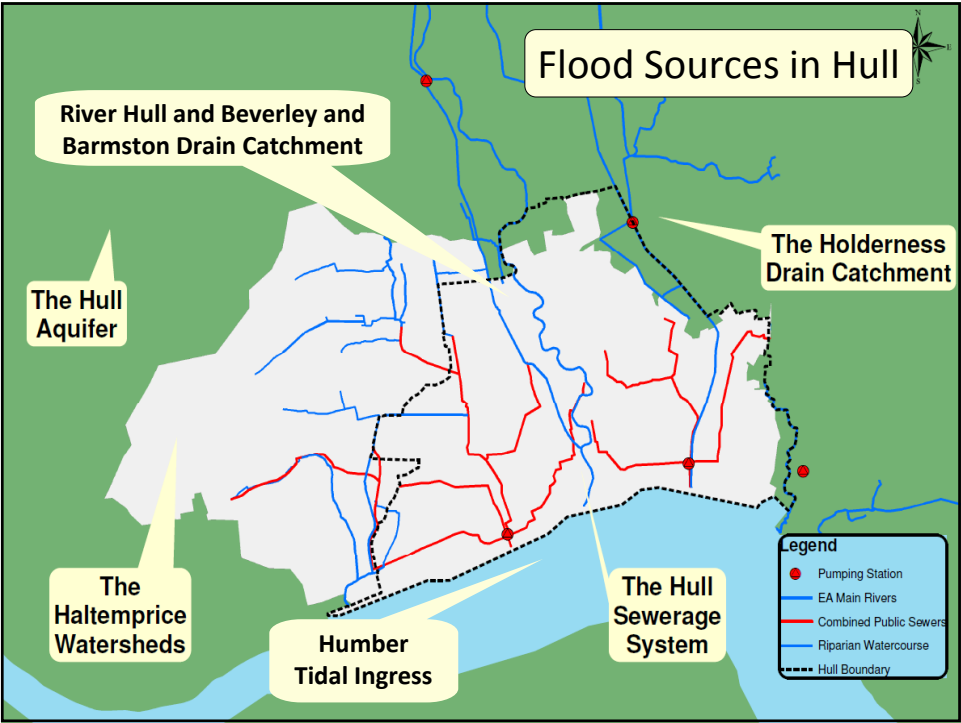


## Aims and Objectives

- Understanding Flood Risk in Hull
- June 2007 Floods
- Partnerships
- The Future
- Questions

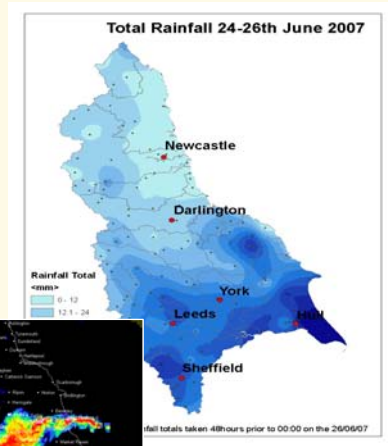
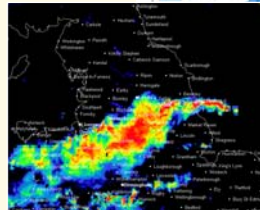






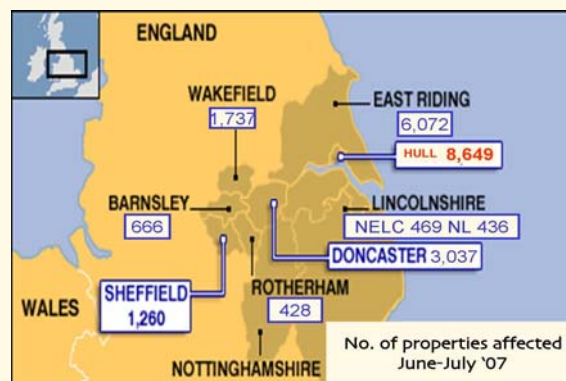
## June 2007 Floods

- Jet Stream further south than normal leading to weather fronts passing over UK
- Hull & Humber as much as 450% of monthly rainfall average
- Many UK rivers at record levels

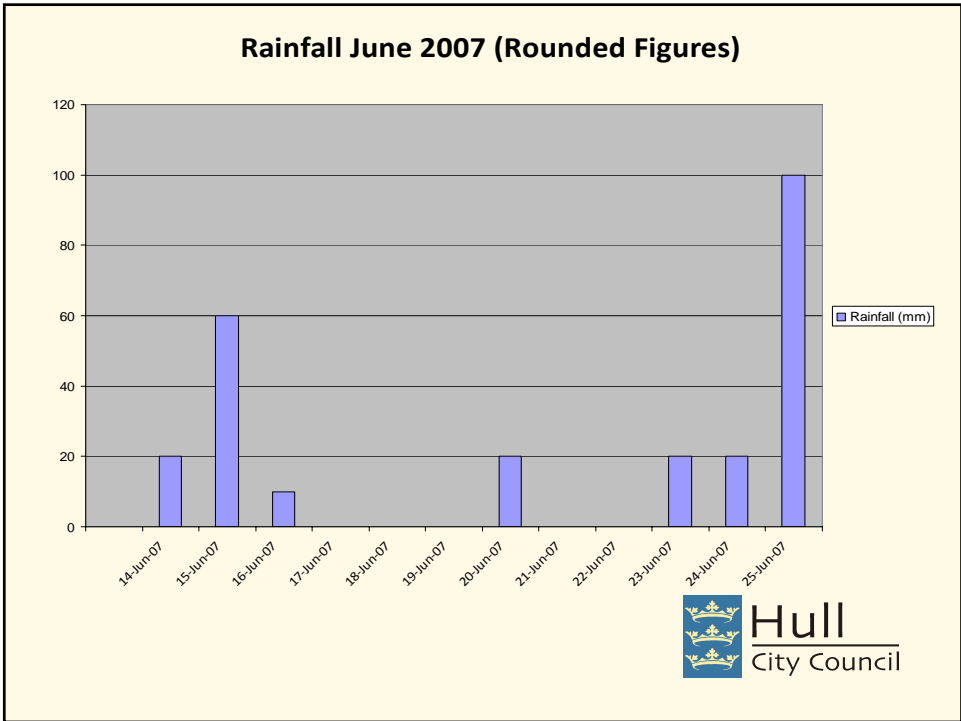


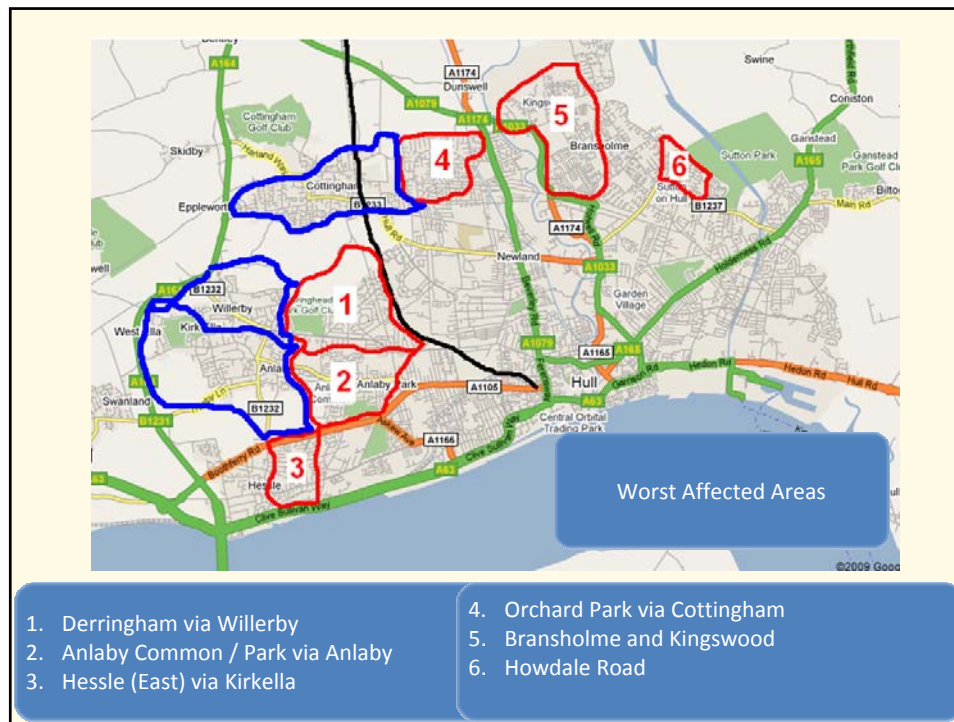
Hull  
City Council

## June 2007 Floods



Hull  
City Council





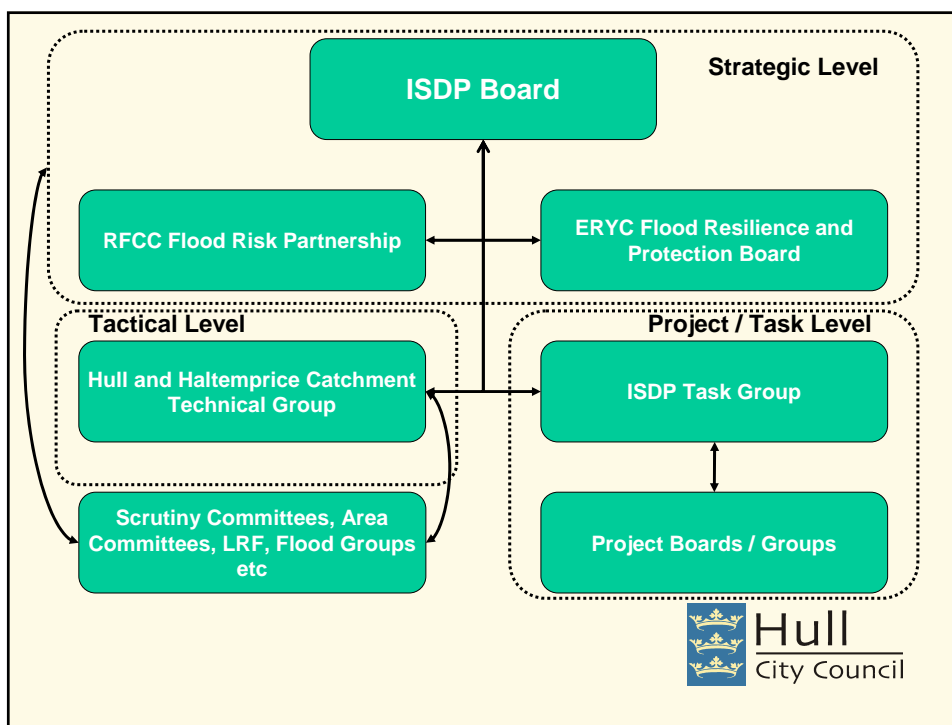
- 6200 properties affected across ERYC area, 7208 in HCC
- 91 of 99 schools flooded in HCC, 42 in ERYC
- 12,500 hectares of prime agricultural land flooded in ERYC area



- > £200M damage caused in ERYC area, £41M damage caused to HCC housing stock alone
- > 1300 business affected in HCC inc. major international companies







## Strategic Level

- Developed post 2007, chaired by chief execs, attended by high level officers
- Bound by TOR and working agreements
- Communications plan
- Implementation plan
- Manage arising issues and lobby



## Tactical Level

- Recognition of cross boundary hydraulics
- Sharing data, models and approaches for consistency and efficiency
- Partnership approaches – scheme feasibility and funding bids
- Partnership approaches – communications and consultation



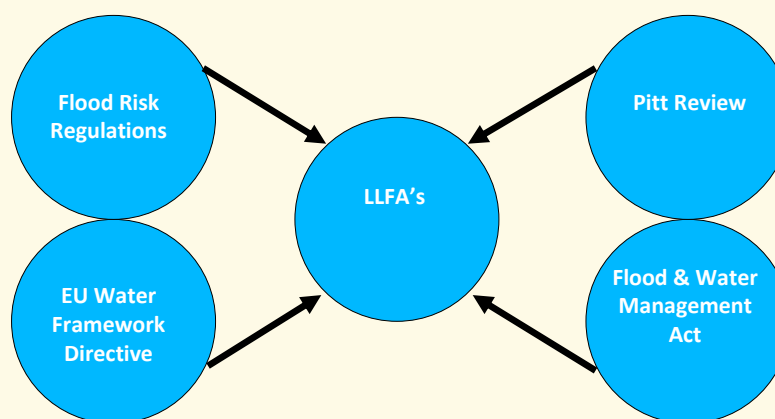


## Project / Task Level

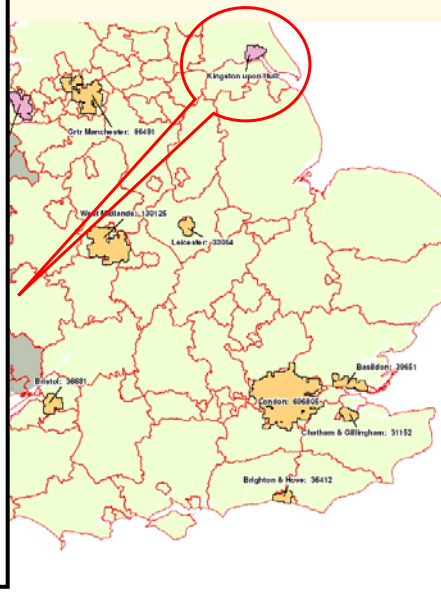
- Projects identified and steered by ISDP Board and other groups – committees, scrutiny etc
- ISDP Task Group ensures all partners identify best approaches – procurement, data sharing etc
- Project groups identify all relevant partners who are part of the project team



## The Future



- Flood Risk Regulations (2009):
- Upper Tier Local Authorities designated as Lead Local Flood Authorities (LLFA)
- A Preliminary Flood Risk Assessment is to be prepared by all LLFA's by June 2011
- Hazard maps and flood risk maps to be prepared by June 2013, management plans by 2015
- A duty for all parties to cooperate and share information



## The Future

- **SuDs – Hull & Haltemprice SAB?**
- **Shared asset databases and GIS**
- **Alignment of PFRA and future modelling and action plans across Hull & Haltemprice catchment**
- **Continued partnership approach for funding bids and scheme development**
- **Consistent approach to consenting, enforcement and investigations**



